

rev	issue	date	by
P1	Initial issue	04/12/06	SJ
P2	Approvals issue	12/01/07	SJ
P3	Pedestrian guard rails added	06/03/07	AH
P4	Circular paving and wall moved	28/03/07	SJ
T1	TENDER DRAWING	26/04/07	SJ
T2	Tender amendment: culvert notes	02/05/07	SJ
C1	CONSTRUCTION DRAWING Location Plan & notes added	15/08/07	SJ

notes:

Any works adjacent to Skirting Beck watercourse must be in accordance with the requirements of the EA. Dimensional sketches and method statements may be required from the contractor.

For planting plans, refer to drawing: M4274/908

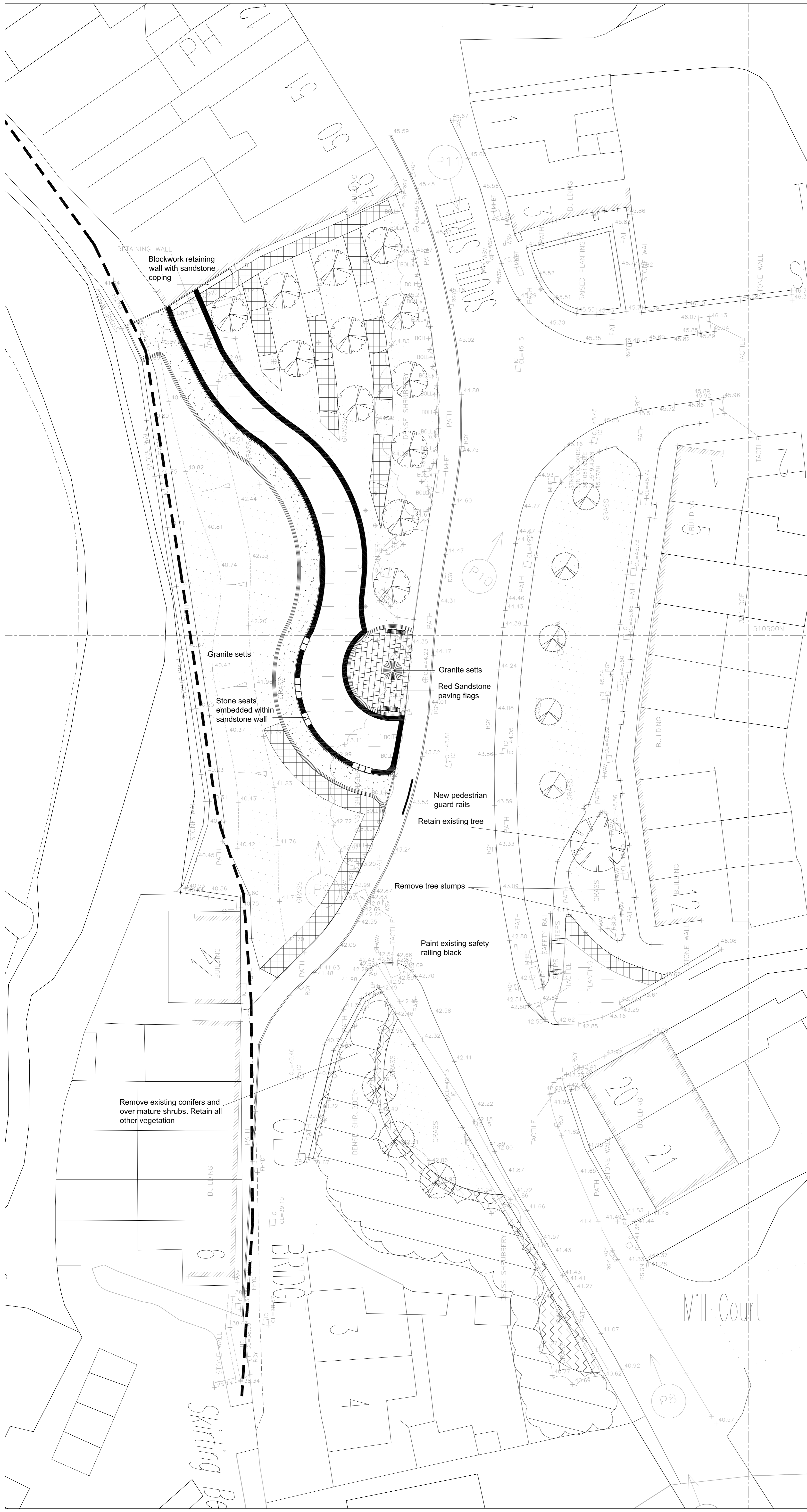
For wall details, please refer to drawings: M4274/603, M4274/604, M4274/605

For Street Furniture details, refer to drawings: M4274/801, M427/802, M4272/803

For Earthworks details, refer to drawings: M4274/302

KEY:

	Mown Grass
	Meadow Grass
	Groundcover planting
	Clipped Beech hedgerow
	Clipped Laurel hedgerow
	Semi-native hedgerow
	Ornamental shrub planting
	Ornamental grasses
	Existing semi-native shrubs
	Thinning of existing shrubs
	Fruiting crab apple tree - <i>Malus 'John Downie'</i> (extra heavy standard, high staked)
	Ornamental crab apple tree - <i>Malus baccata 'Street Parade'</i> (extra heavy standard, staked) - <i>Malus 'Rudolf'</i> (extra heavy standard, staked)
	Apple tree sapling
	Ornamental Cherry tree - <i>Prunus avium 'Plena'</i> (extra heavy standard, high staked)
	Oak tree - <i>Quercus palustris</i> (extra heavy standard, staked) - <i>Quercus robur</i> (extra heavy standard, staked)
	Birch tree - <i>Betula pendula</i> (extra heavy standard, staked) - <i>Betula utilis var. Jacquemontii</i> (extra heavy standard, staked)
	Existing tree
	Sapling to be removed
	New red sandstone wall
	Red Sandstone
	Granite setts
	Tarmac Footpath
	Maidstone Town Seat supplied by Furnitubes (see dwg. M4274.801)
	Litter bin supplied by Voss (see dwg. M4274.801)



client	Copeland Borough Council
job title	Egremont Gateways Detailed Design
drawing title	Pocket Park General Arrangement Plan
scale	1:200 @ A1
date	09/01/07
drawn by	SJ
checked	AH/SN
drawing no.	M4274/108

White Young Green

GILLESPIES

Gillespies House
Wood Street
Altrincham
Cheshire WA14 1ED

T 0161 928 7715
F 0161 927 7680
E admin.manchester@gillespies.co.uk