

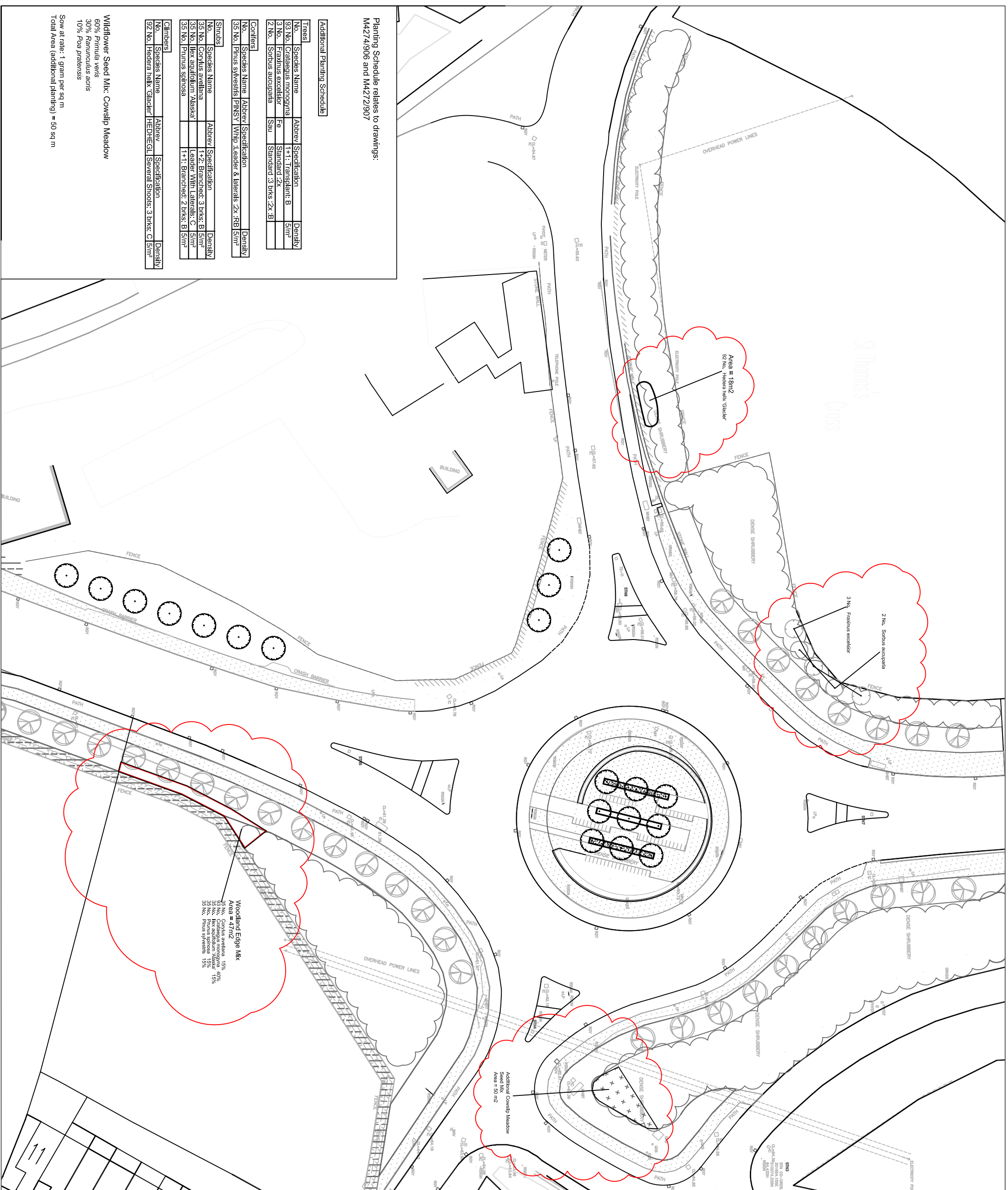
Rev	Issue	Date	By
P1	Initial Issue	12/01/07	SJ
P2			SJ
P3	Revised this notification with this info	28/03/07	SJ
T1	Tender Issue	25/04/07	SJ
C1	Construction Issue	15/09/07	SJ
C2	Planting revision	20/11/07	SJ
C3	Additional planting	28/11/07	SJ

NOTES

Client: Copeland Borough Council
 Project: Egremont Carways Detailed Design
 Drawing No: Planting Plan - South Roundabout
 Date: 12/01/07
 Scale: 1:200 @ A0
 Drawing No: M427/4/905

White Young Green
 GILLESPIES

Contractor: GILLESPIES
 108-110A St. James's Cross
 Newcastle NE4 1JG
 Tel: 0191 277 2000
 Fax: 0191 277 2001
 Email: sales@gillespies.co.uk



Planting Schedule relates to drawings:
 M427/4/906 and M427/9/07

Additional Planting Schedule

Trees	No.	Species Name	Abbrev	Specification	Density
	93 No.	Crataegus monogyna	Cr	1+1: Transplant B	5/m ²
	3 No.	Fraxinus excelsior	Fa	Standard 2x	
	2 No.	Sorbus aucuparia	Sau	Standard 3 brks 2x .B	

Climbers	No.	Species Name	Abbrev	Specification	Density
	35 No.	Pinus sylvestris	PN	1: Leader & laterals 2x: RB	5/m ²

Shrubs	No.	Species Name	Abbrev	Specification	Density
	35 No.	Corulus avellana	Co	1+2: Branched: 3 brks: B	5/m ²
	35 No.	Ilex aquifolium Alaska	Ia	Leader With Laterals: C	5/m ²
	35 No.	Prunus spinosa	Ps	1+1: Branched: 2 brks: B	5/m ²

Climbers	No.	Species Name	Abbrev	Specification	Density
	92 No.	Hedera helix Glacier	HE	Several Shoots: 3 brks: C	15/m ²

Wildflower Seed Mix: Cowslip Meadow
 60% Primula veris
 30% Ranunculus acris
 10% Poa pratensis

Sow at rate: 1 gram per sq m
 Total Area (additional planting) = 50 sq m